



BICAS BITES

Life is looking more and more “normal” at the Arts Centre now that many of the Working Together Groups are meeting again in the studios. Wonderful to see familiar faces, hear the chat and laughter and that the spirit of creativity and sharing is undimmed for the long absence.

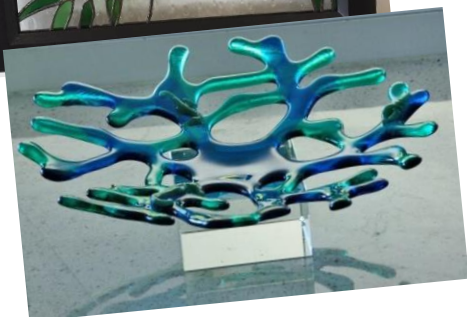


More good news is that **Café 191 will re open on Tuesday June 16.** Chef Corey is keen to get back his barista muscle and the BICAS members coming in now are hanging out for a “real” coffee. The Café will operate just week days, ie Tuesday to Friday, 9am to 2pm, until the **Arts Centre Galleries and Gift Shop re open on Tuesday July 7** – the week Stage 3 of restrictions easing in Queensland. Naturally, there are hygiene and social distancing regulations to observe. These will be displayed as reminders around the Café area. Please read and keep to these. We want everyone to be safe and well while enjoying the social and creative aspects of our Centre. The menu at start-up will be restricted to hot and cold beverages, and cakes, slices and light snacks. The move to full meals service will take a few weeks, so please bear that in mind.

As said in previous BICAS BITES, you artists blow me away with your imagination and courage to try new things. Painter **Lizzie Connor** has started a lovely brumbies series. Expect to see some of this great work in an



exhibition she'll have in the Matthew Flinders Gallery later this year. **Suzanne Dennis** is on a roll with her beautiful birds. Look at this golden one.



Leadlighters **Prim and Yvonne** are producing some gorgeous works. The **Thursday Quilters** and the **Island Quilters** have been amazing in their dexterity and dedication to their craft. **Jill** has made this lovely quilt to donate to the Caboolture Hospital Special Care Nursery; **Helen's** new specialty is clever bags like this one. **Both quilting**

groups have kindly made a stack of cosy beanies, socks

and rugs for the **Prince Charles Palliative Care clinic** to keep their fragile patients warm in



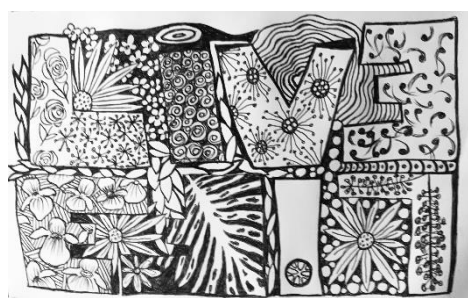
this chilly weather.

Jools Lambert at the Clinic says they are hugely appreciative of the groups members' kindness. The **Zen Doodlers** are pleasingly

hard at it, with more fantastic designs continually coming in. Here's a few of them.



Can't wait to see them all up on the wall at the Arts Centre.



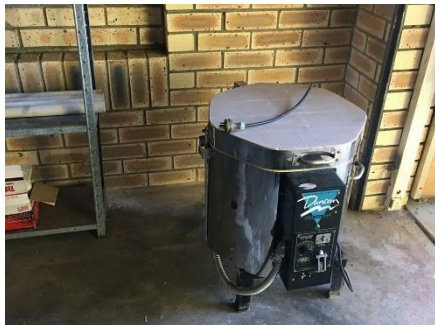


We'll make Zendoodles the **Artist of the Month** feature in **August**.
Send yours in to

venuemanager@bribieartscentre.com.au

The Zen craze is everywhere. Here's one on a powerbox in suburban Zillmere (*right*).

BICAS volunteer and keen potter, **Kelly Vass** is excited about installation of her home kiln.



(*left*) Look forward to seeing some great clay work from you soon, Kelly.



One of the advantages of lengthy downtime at the Arts Centre has been the opportunity to

explore the **walking tracks through the adjoining bushland** on Sunderland Drive. **Alan Carr**, local native plant guru, has been

a wonderful guide on recent glorious winter mornings for several BICAS members along the pathways into these beautiful Banksia, Eucalypt, Melaleuca, Palm Glade and forest escapades, alive with birdsong. **Alan** has redrawn handy maps of the tracks, with detailed information of the vegetation along the way, which will be available at the Arts Centre when we reopen. Many keen bushwalkers and birdwatchers will be delighted to use these to fully appreciate the glorious and often hidden wonderland right on our doorstep. **Alan** will be available soon for monthly informative guided walks there. Stay tuned for details.



The Labyrinth Group now has **walking/silent meditation at the Labyrinth at noon on Fridays** as the colder weather sets in . The meditation will be followed

by BYO lunch (or lunch from Cafe 191). They welcome contributions of environmentally-friendly art and suggestions for further developments. Contact **Joyce Newell on 0439 329 334**. Their **Winter Solstice meditation** will be the following **Friday, June 19**.

There are some **Working Together Group** members and **VOLUNTEERS** who have decided not to return when we restart for business. So if you are interested in **joining an art group**, or lending a hand with our band of **volunteers**, please get in touch. We'd love to hear from you. **Go to the BICAS website and go to the JOIN US tab** or contact me on venuemanager@bribieartscentre.com.au



With time recently to browse through **old BICAS newsletters** going back to 1987, it's interesting to see what was driving Bribie Island artists back then. I was very moved to read the inspired vision that people like the late Margaret Guthrie had and the glee with which she reported that year. BICAS fund-raising dollars mounted to match Government grants so they could look forward to the pouring of the slab here.

It's timely to reflect on and feel gratitude to Margaret and her committee of artists, followers, and community members, for the magnificent Centre we enjoy today. Yes, their grand plans for a theatre and museum on the Centre site did not materialise. But life doesn't always bring you what you want. Life gives and takes away.

Covid has been an unexpected and, for some, devastating occurrence. While I have waxed on here about the opportunities and quiet time it's given many BICAS artists, I am mindful there are also members who have family, friends and loved ones whose lives and livelihoods it tore apart.

Life gives and takes away.

The Arts Centre has suffered significant financial losses during the Covid-19 shutdown, and it will take some time to recover these and readjust with the restrictions we must live with. There will be some changes to how we manage things and not all of them may be to your liking. But we are still here and the lights WILL go on again this month and next. If we can all pull together and ride over the bumps as they come, we can land safely and smoothly.

I look forward to seeing you all here.

Julie