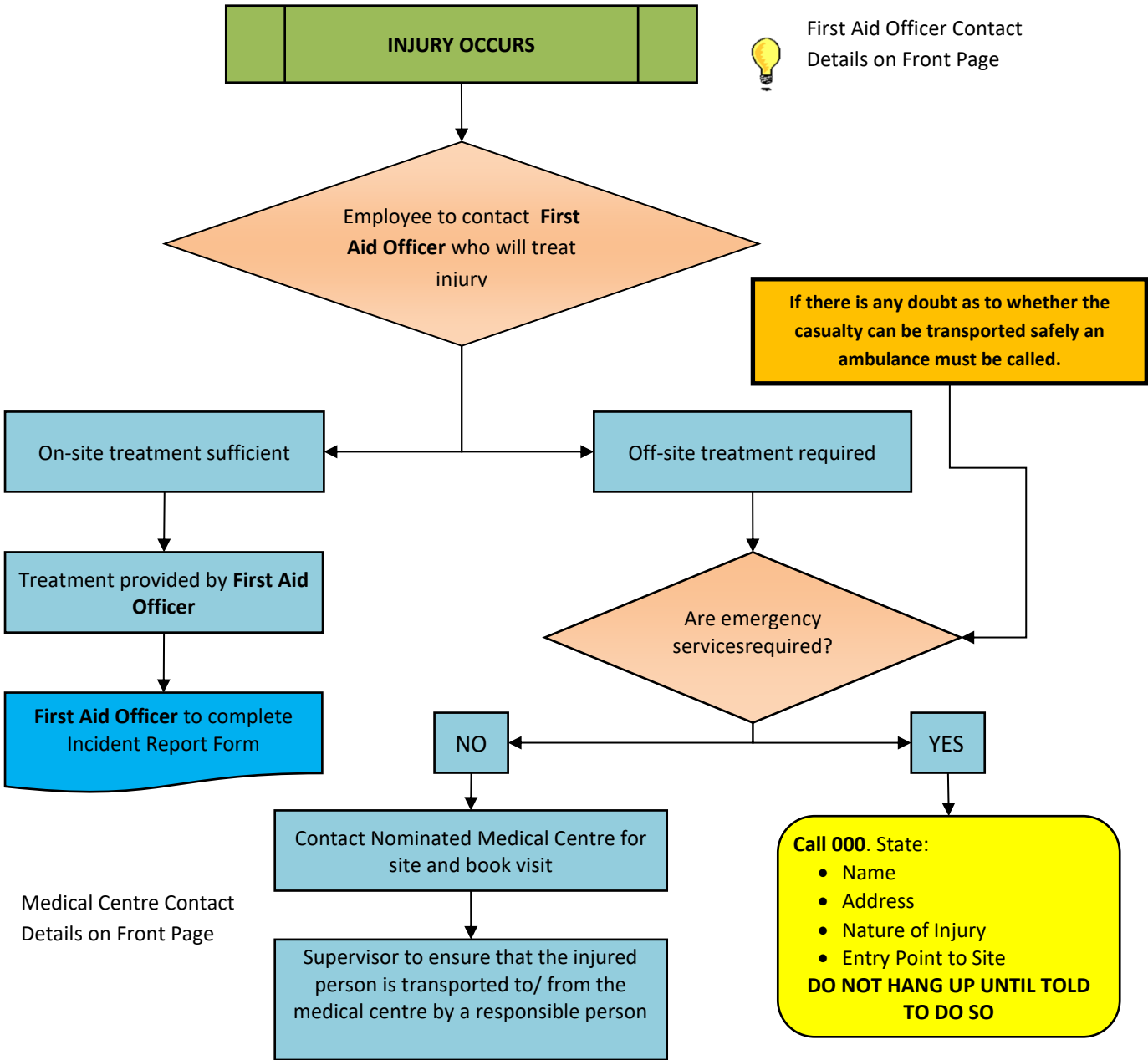


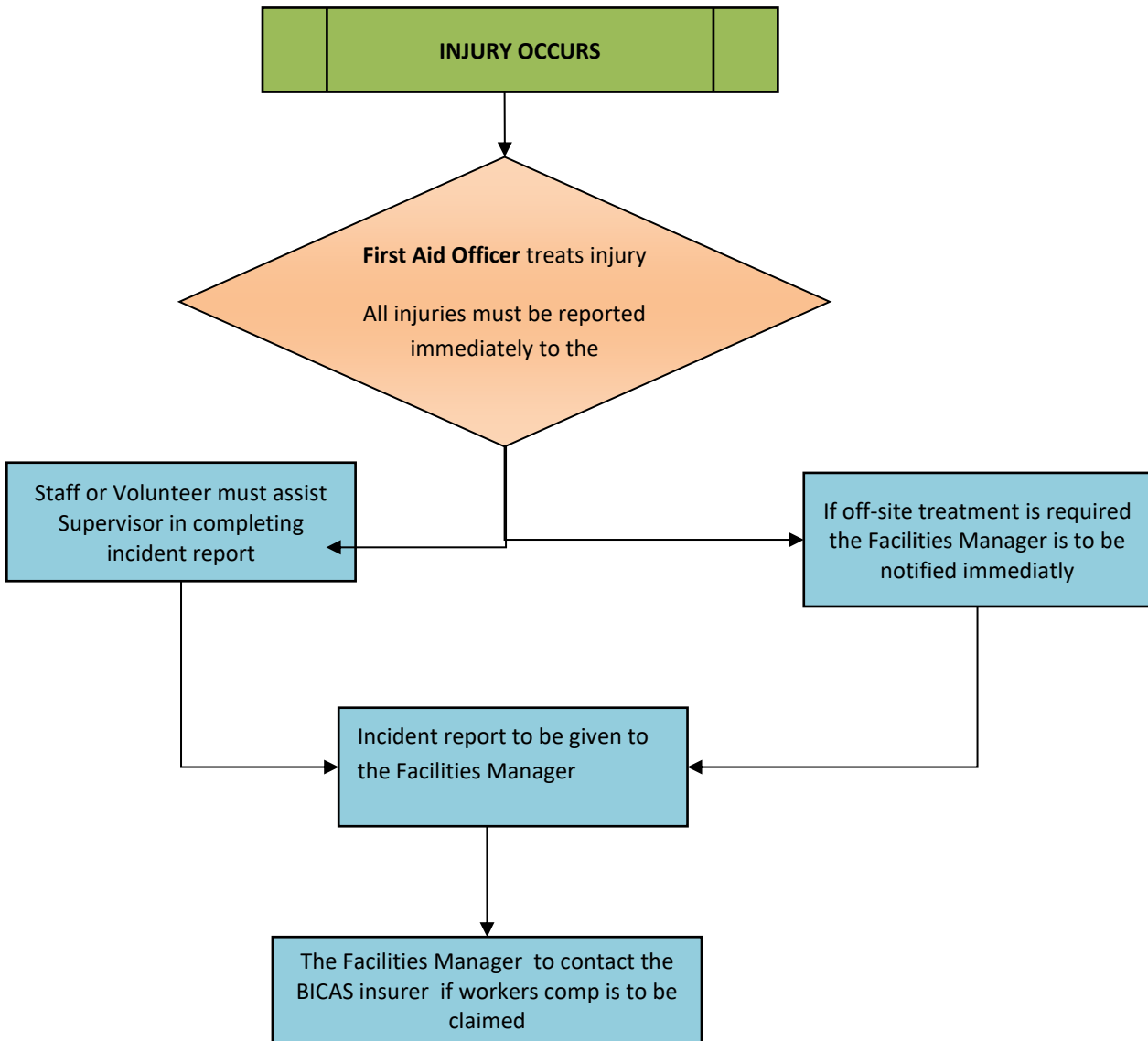
POSITION	NAME	CONTACT DETAILS	
Facilities Manager / Emergency Response Coordinator	Julie Thomson	0427-723198	
First Aid Officers	REFER TO LIST AT FRONT DESK/ EMERGENCY RESPONSE GUIDES		
Nominated Site Medical Centre	Banksia Beach Medical Centre	ADDRESS	15/25 Sunderland Dr, Banksia Beach QLD 4507
		PHONE	3408 6822
Nearest Hospital	Caboolture Hospital	ADDRESS	120 McKean St, Caboolture QLD 4510
		PHONE	5433 8888
Emergency Services	FIRE	Dial 000 or	3408 8383
	AMBULANCE		
	POLICE		3410 9222
	SES (Bribie Island)		13 25 00
	POISONS INFORMATION	13 11 26	
Electrical Emergency (Nominate Supplier for Site)	Ergon Energy	13 16 70 (Life Threatening); 13 22 96 (Faults)	
	Energex	13 19 62 (Life Threatening) ;13 62 62 (Faults)	
	Country Energy	13 20 80	
Gas Emergency	Elgas	13 11 61	

Ref	Category
1	MEDICAL RESPONSE
2	INJURY MANAGEMENT
3	EVACUATION
4	FIRE RESPONSE
5	PERSONAL THREAT / SUSPICIOUS MAIL OR PARCEL
6	ELECTRICAL EMERGENCY
7	GAS LEAK / CHEMICAL SPILL
8	SEVERE WEATHER EVENT (BUSH FIRE / CYCLONE WARNING/ FLOOD)
ATTACHMENTS:	

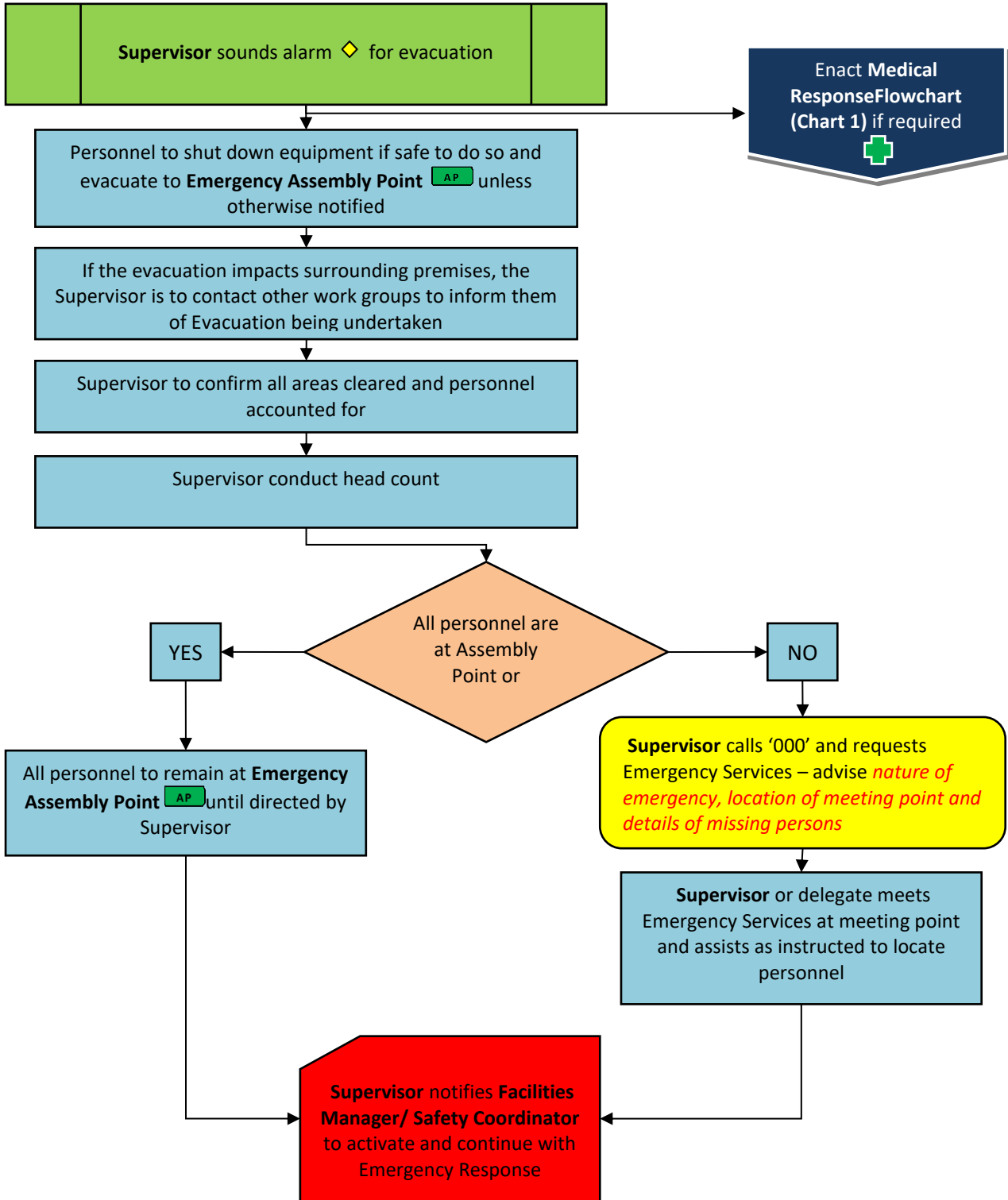
1 MEDICAL RESPONSE



2 INJURY MANAGEMENT



3 EVACUATION



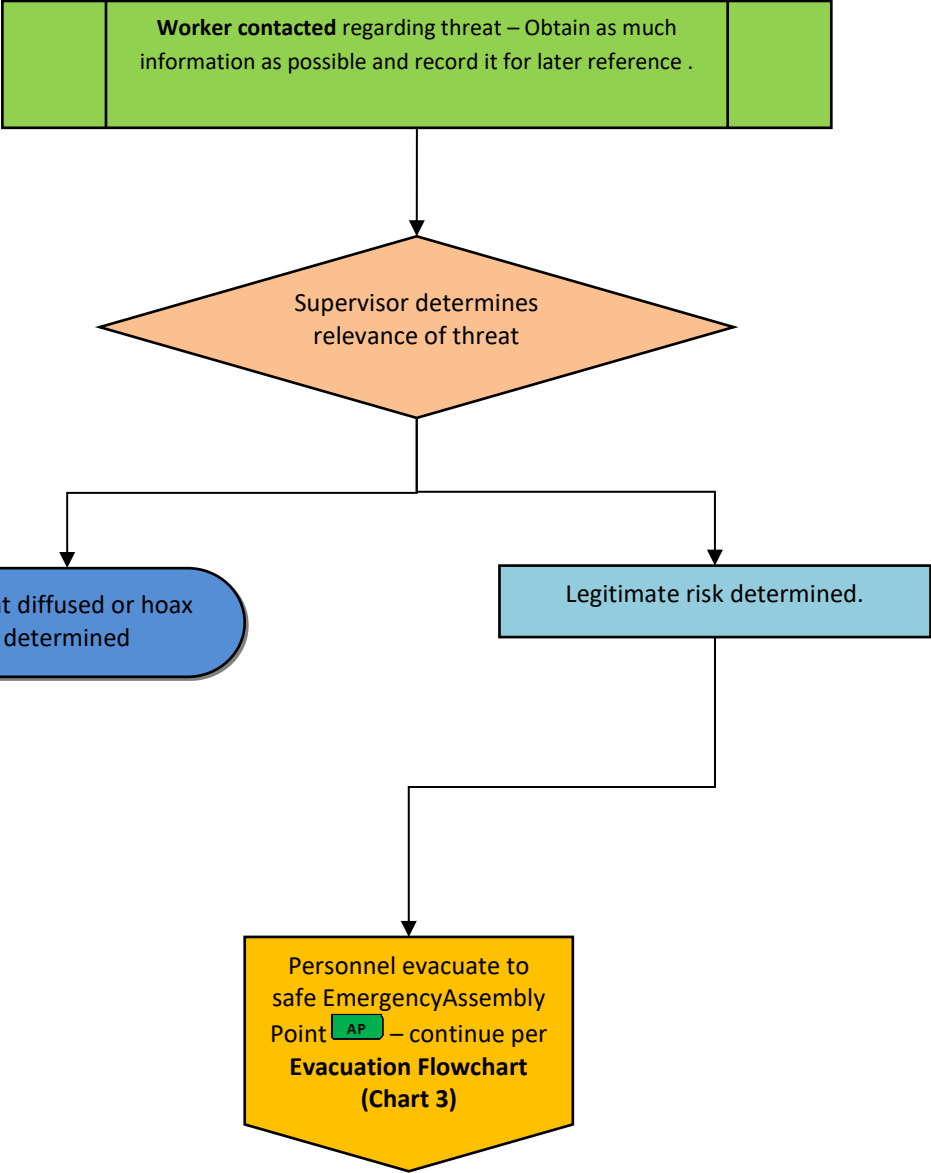
4 FIRE RESPONSE



Points to remember with FIRE:

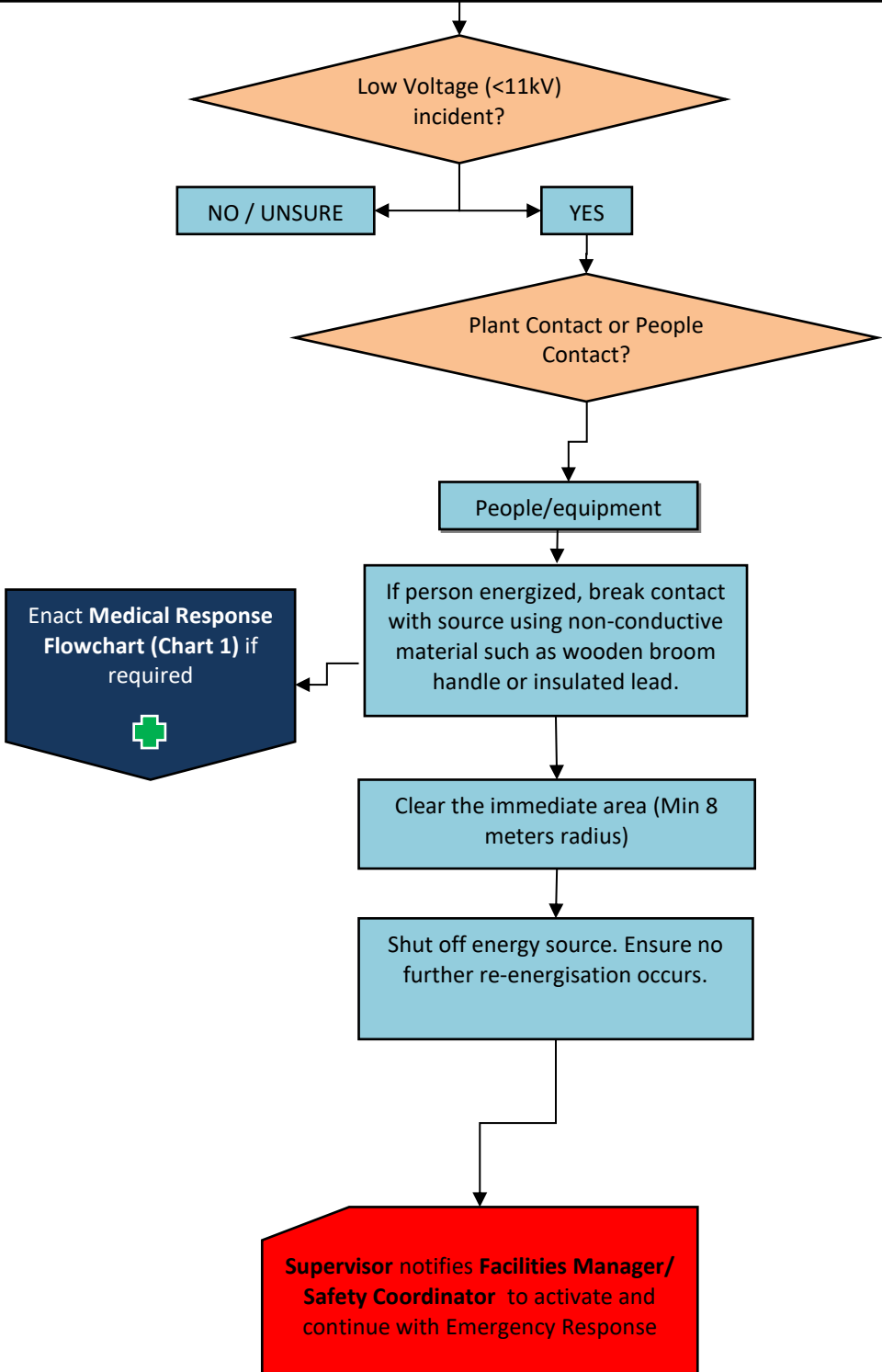
- Know where the fire extinguishers/ equipment are. Fire suppression equipment is indicated on the Site Plan by the relevant symbol – see equipment list
- Always ensure that fire equipment is not obstructed by any item of plant or equipment
- Always ensure that ignition sources (e.g. smoking) is kept away from any stored or used flammable substances
- Turn off power or gas when not in use for extended periods or left unattended
- Use the correct fire extinguisher/ equipment for the type of fire – if unsure, **DO NOT ATTEMPT TO FIGHT FIRE**

5 PERSONAL THREAT / SUSPICIOUS MAIL OR PARCEL

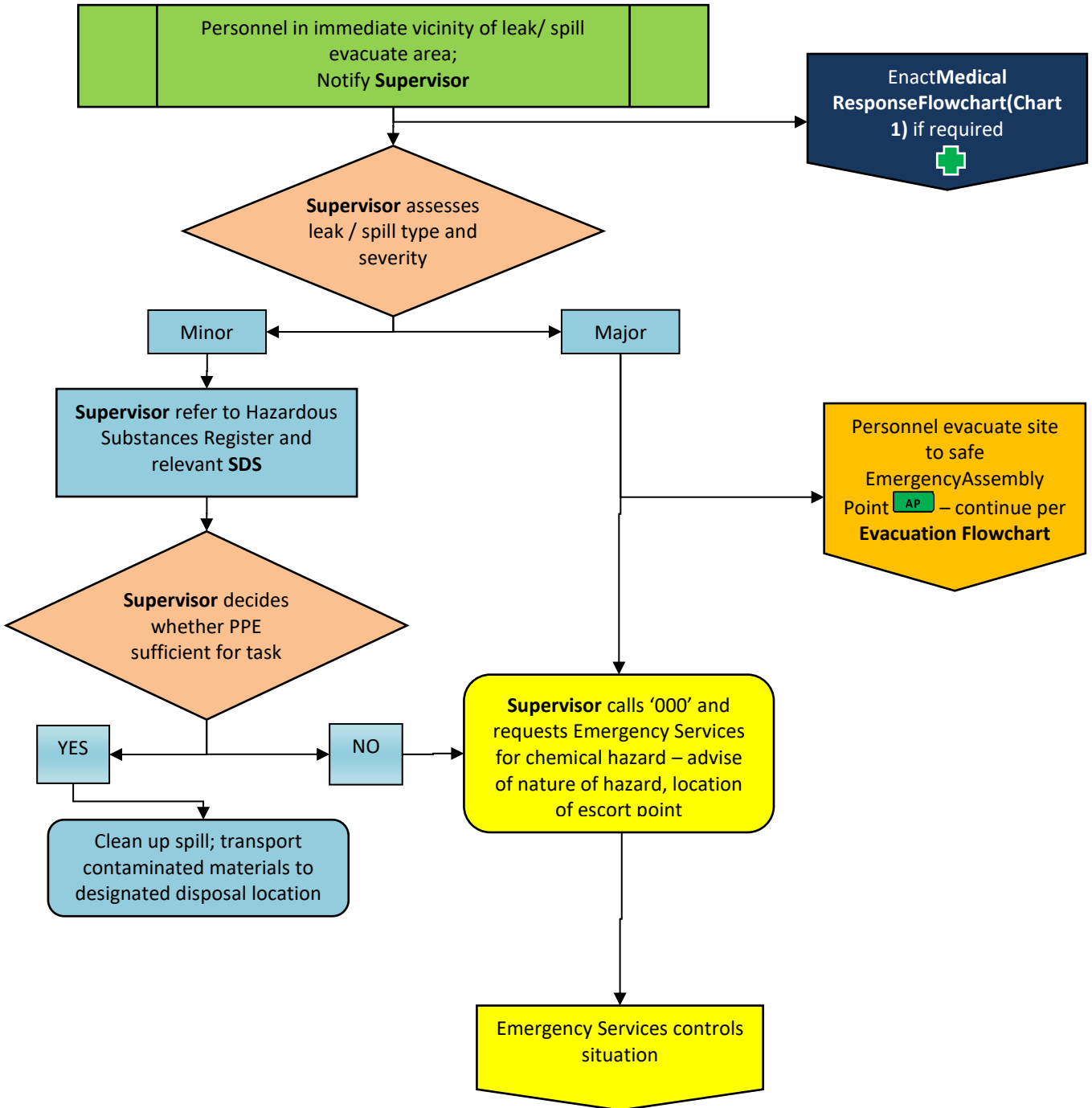


6 ELECTRICAL EMERGENCY

Incident occurs with electrical source. Assume all electrical sources are live.
Supervisor to be contacted and control situation and responded.



7 GAS LEAKS/ CHEMICAL SPILLS



8 SEVERE WEATHER EVENT (BUSH FIRE / CYCLONE WARNING/ FLOOD)

